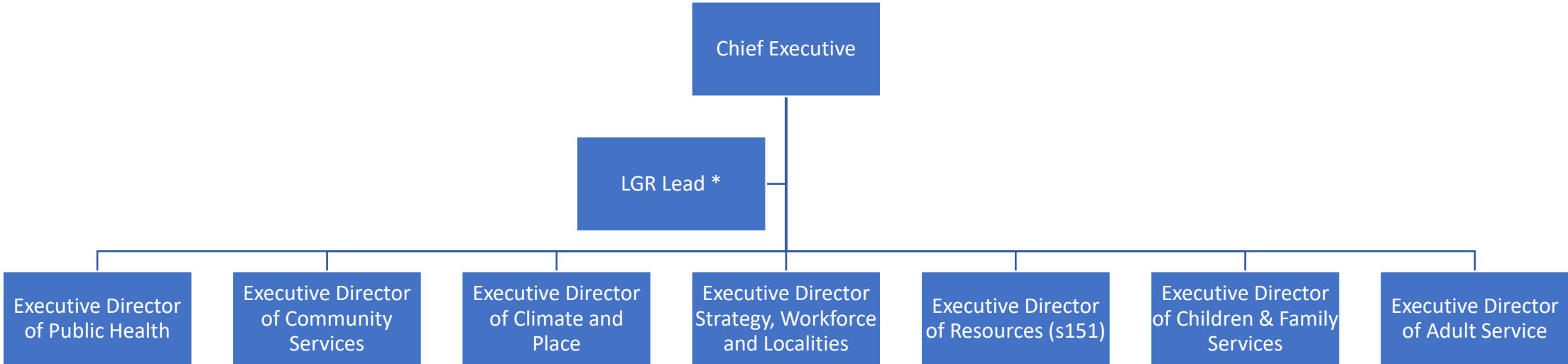
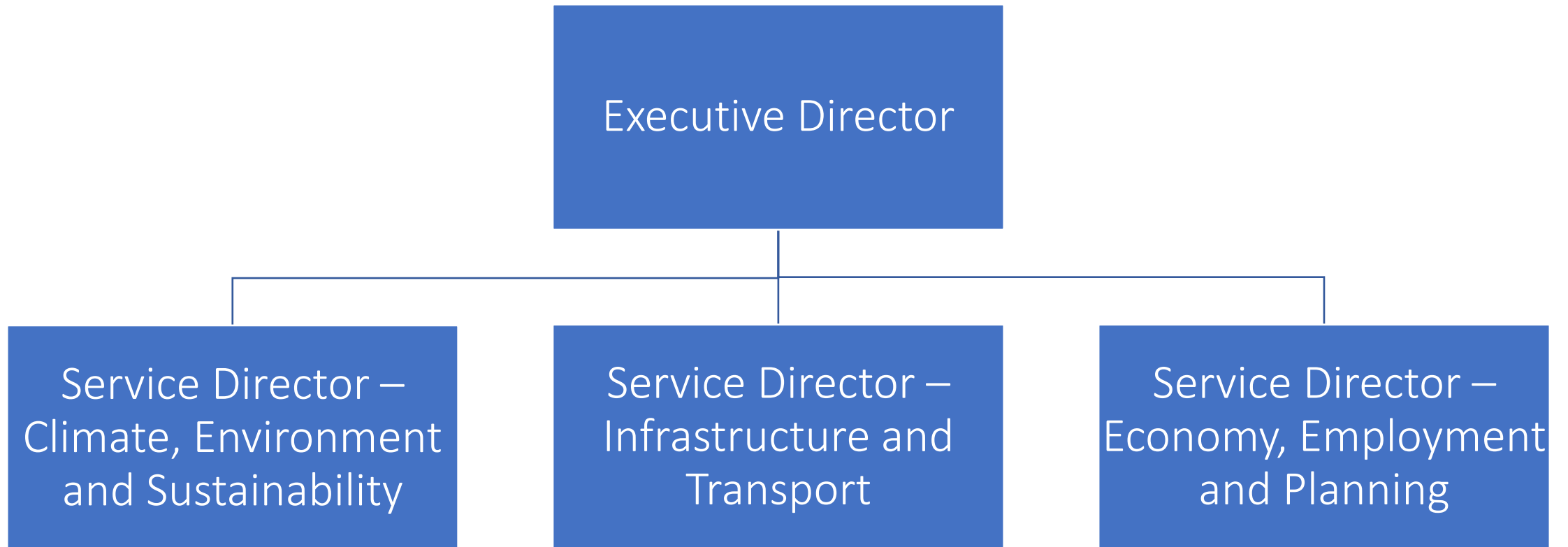


# Tier 1 & 2



\* Fixed term post to continue delivery of LGR post Vesting Day, if required

# Climate and Place



# Executive Director Climate and Place

## **Climate, Environment and Sustainability**

- Strategy and Partnership development
- Carbon Neutrality
- Climate Resilience and Adaptation
- Renewable Energy
- Country Parks, Local Nature Recovery Strategy, Local Nature Reserves, AONB Partnerships (Countryside Services)
- Biodiversity (and net gain) and Ecology
- Sustainability
- Waste Service
- Emergency Planning and Business Continuity
- Water Management
- Lead Local Flood Authority & Land Drainage
- Flooding Response
- Coastal Protection Authority
- Somerset Rivers Authority

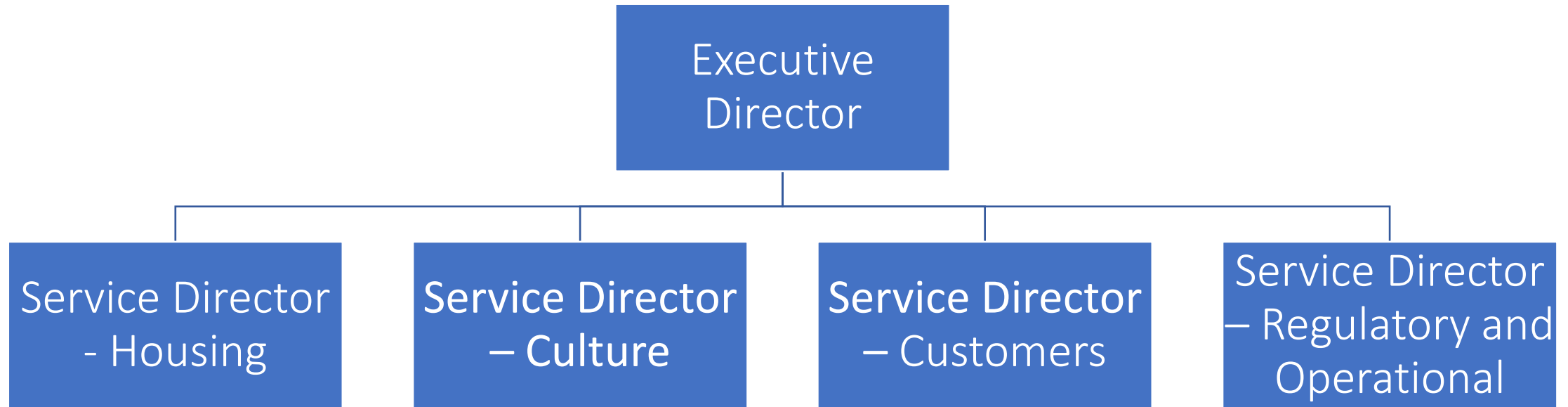
## **Infrastructure & Transport**

- Highways Authority
- Public Rights of Way
- Parking
- Active Travel
- Traffic Management
- Transport
- Public Transport
- Fleet Management
- Contracted Transport
- Strategic Transport Planning
- Highways Major Projects
- Road Safety
- Delivery Programme Management
- Infrastructure Commissioning

## **Economy, Employment & Planning**

- Economic Development
- Planning (conservation and heritage at risk, enforcement, DM, local plan, waste and minerals, s106 allocations/CIL, Phosphates)
- Affordable Housing and Enabling
- City/Town Centre Management
- Building Control
- Trading Standards (Devon partnership)
- Skills
- Education Business Partnership
- Economic infrastructure , services and Innovation Centres
- Regeneration (non-housing)
- Major Projects
- Nuclear Power
- Scientific Services

# Community Services



# Executive Director of Community Services

## **Housing**

- Strategy and HRA Business Plan
- Arms Length Management Organisation
- Homelessness - Rough Sleepers pathway
- Housing Options & Allocations – Homefinder Somerset
- Housing and Leaseholder Management
- Housing Maintenance - Responsive and Planned (capital programme), compliance, void management
- Housing Development & Regeneration
- Tenant Services –Worklessness & Tenancy Management (new tenancies, income, debt and benefit support, rent setting, service charges tenancy compliance)
- Somerset Independence Plus and financial assistance – DFG, loans, advice
- Sheltered and Extra Care
- Housing Property Service
- Registered Providers and Partnerships
- Gypsy, Traveller and Van Dweller Services
- People Displacement Schemes and Services

## **Customer Services**

- Customer Service Strategy and Standards
- Corporate Customer Services
- Contact Centre
- Compliments & Complaints, Ombudsman cases
- Local Service Centres
- Customer Engagement and Access

## **Cultural Services**

- Libraries and Local Offer
- Museums
- Theatres
- Leisure Centres, Facilities and Services (contract and direct)
- Sports Development Partnership
- Heritage Assets
- Arts Centres, Facilities, Services and Development
- Culture Facilities, Services and Development
- Tourism Facilities, Services and Development including cafes
- Community Facilities

## **Regulatory and Operational Services**

- Environmental Health and Licensing
- Registrars
- Coroners
- Environmental Protection and Enviro-crime
- Port Health Authority
- CCTV and anti-social behaviour
- Safety Advisory Group
- Private Sector Housing
- Street Cleansing
- Grounds
- Maintenance
- Beach Management
- Unauthorised encampments
- Parks and Play Areas
- Public Toilets
- Dog Wardens
- Operational Service to Partners
- Bereavement Services
- Fairs and Markets

# Resources and Corporate Services (s151)



# Executive Director Resources and Corporate Services (s151)

## **Finance**

- Finance Services (inc. Business Partners)
- Revenues and Benefits
- Pension Fund
- Capital Management
- Treasury & Corporate Debt Management
- Housing Revenue Account Financial Strategy
- Internal Audit
- Procurement
- External Audit
- Financial Systems
- Risk & Insurance Management
- Direct Payments
- Financial Assessment and Deputyship

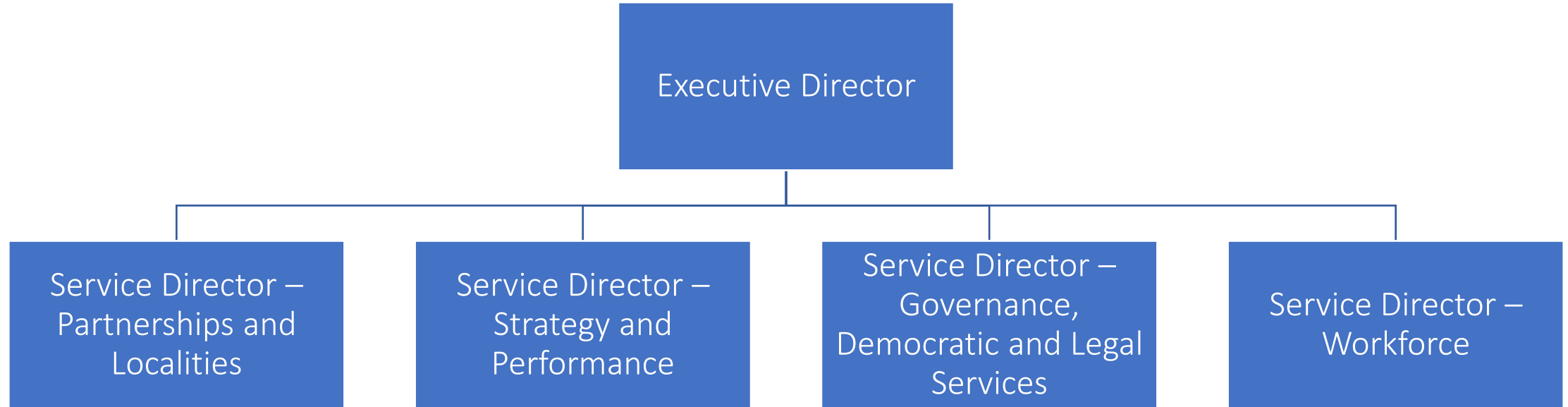
## **Strategic Asset Management**

- Corporate Landlord function (land and property asset management)
- Asset management strategy
- Estates and Valuations
- Rural estate management
- Site acquisition, disposal and development
- Property records & database
- Commercial investment property
- Facilities management, premises contracts, property maintenance & helpdesk
- Premises compliance & risk management, site security and management
- Closed churchyards
- Schools & general fund condition programme
- Estate decarbonisation strategy and delivery
- Construction project delivery – schools and major projects vice & internal consultancy support

## **Information Communication Technology**

- Strategy and Architecture
- Operations & Security
- Support
- Infrastructure
- Telephony
- Technical Project delivery
- Application development
- Innovation, research and development
- Project Pipeline
- Supplier Management
- Service Management
- Future Technology

# Strategy, Workforce and Localities



\* following conclusion of LGR Programme



# Executive Director Strategy, Workforce and Localities +

## Partnership and Localities

- Local Community Networks
- Strategic Partnerships
- City, Town and Parish Council Liaison
- Local devolution - Community Asset Transfers, Service devolution
- Community, Voluntary Faith, Social Enterprise Strategy and Engagement
- Volunteering Services
- Engagement
- Locality management, delivery, partnerships and projects
- One Teams
- Community Development
- Special Projects
- Grants & Lotteries

## Strategy and Performance

- Strategy and Policy
- Transformation
- Performance and Benchmarking
- Communications
- Programme Management, Project Management
- Change and Improvement
- Business Intelligence and Analysis
- Data Visualisation & Complex Analytics, Data Management/Warehousing
- Digital - Development and Service
- Legislation and Horizon Scanning
- Statutory Returns
- Commissioning Framework and Development
- Address Management (LLPG, LGS, Street Naming and Numbering)
- Land Charges
- GIS
- Corporate Equality and Armed Forces Covenant

## Governance, Democratic & Legal Services (MO)

- Member Services and Casework
- Lieutenancy
- Democratic Services
- Elections Operation
- Electoral Registration
- Information Governance and Records Management inc. GDPR, FOI, RIPA
- Corporate Governance Framework
- Annual Governance Statement
- Whistleblowing
- Officer Code of Conduct
- School Admission, Exclusion and Transport Appeal Hearings
- Civic & Ceremonial Duties
- Legal Services: Child Protection Legal Services, Adults Services Legal Services, Commercial and Contracts Legal Services, Property and Conveyancing Legal Services and Employment Legal Services.

## Workforce

- Workforce Strategy and Planning
- Organisational Health and Wellbeing
- Operations
- Business Partnering
- Payroll & Pensions
- Organisation Development
- Organisational Learning
- Health and Safety
- Staff Benefits
- Policy & Reward
- Organisational Equality, Diversity and Inclusion
- Change Management

*Health ICB/LCNs – prevention and integration*

+ Lead Commissioner

# Public Health



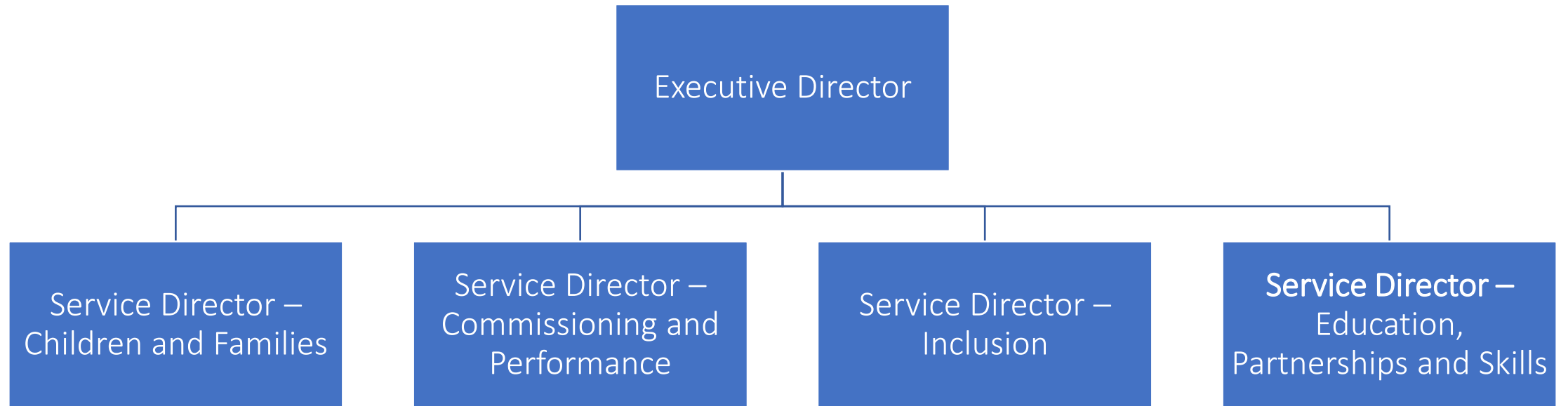
# Executive Director of Public Health

## **Public Health (Deputy Director Public Health)**

- Provision of Specialist Public Health advice to the system
- Influencing policy, practice and commissioning to improve health & wellbeing
- Inequality, Inclusion and Diversity (Strategy and Engagement)
- Somerset Health and Wellbeing Board (HWBB & ICP)
- Protection of the Public's Health
- Health Improvement
- Tackling Health Inequalities
- Healthcare Public Health
- Specialist public health advice and support to PCN/LCNs
- Public Health Commissioning
- Public Health Nursing
- Healthy Lifestyle Services
- Provision of public health training/lecturing
- Centre for Specialist Registrar Training
- Behavioural Insights
- Public Health Research and Evaluation & links with academia
- Health and Care Knowledge, Intelligence & Clinical audit (preferably joint for ICS)
- Population Health
- Community Safety Partnership
- Domestic Abuse
- **VRU/VAWG**

*Health ICB/LCNs – prevention and integration*

# Children Services



# Executive Director Children Services

## **Children and Families**

- Children Looked After and Care Leavers
- Children with Disabilities
- Preventative Services
- Quality Assurance
- Principal Social Worker

## **Commissioning and Performance**

- Commissioning
- Business Support
- Partners and Market Development
- Safeguarding Partnership

## **Inclusion**

- Special Educational Needs and Disability
- Access & Additional Learning Needs
- Virtual School & Learning Support Service
- Special Educational Needs Advisory Services & Educational Psychologist

## **Education, Partnerships and Skills**

- Support Services for Education
- Early Years
- School Improvement
- Sufficiency
- Somerset Association of Primary Headteachers

# Adult and Health Services



# Executive Director Adult and Health Services

## Service Director Operations

- Acutes
- Safeguarding
- Partnership
- Neighbourhoods/Communities
- Intergration
- Carers
- Care/Alarm Lines and Rapid Responders

## Service Director Commissioning

- Market development
- Joint commissioning
- Community and Innovation linked to Neighbourhoods
- Assurance/inspection
- Brokerage
- Quality & Performance

## Service Director Transformation

- Adults' transformation programme
- Delivery of legislative change
- Adults' strategy and alignment with ICS strategy
- Service governance and forward planning
- Communications